



ONE STOP PURCHASING OF SCAFFOLDING
AND BUILDING MATERIALS



TIANJIN HUAYOU SCAFFOLDING CO., LTD. MAIN CONTACT

📍 **Address:** Room 331-332, Huaying Building,
No.16 Zhongxin Avenue, Airport Economic
Zone, Tianjin City, China

☎ **Tel:** 022-84846720
Mobile: +86 13718175880
✉ **Email:** info@huayou-scaffold.com
🌐 **Web:** www.huayouscaffold.com

天津华友脚手架有限公司
TIANJIN HUAYOU SCAFFOLDING CO., LTD.

Table Of Content

01	RINGLOCK SCAFFOLDING SYSTEM	01
02	OCTAGONLOCK SYSTEM	03
03	STEEL PROP	04
04	SCAFFOLDING PLANK	05
05	KWIKSTAGE SCAFFOLDING	07
06	CUPLOCK SCAFFOLDING	09
07	OTHER ANCILLAR SCAFFOLDING	10
08	FRAME SCAFFOLDING	11
09	ADJUSTABLE SCREW JACK	14
10	SCAFFOLDING COUPLERS&ACCESSORIES	15
11	SCAFFOLDING PIPE	17
12	ALUMINUM LADDER	18
13	ALUMINUM SCAFFOLDING	19



Tianjin Huayou Scaffolding Co., Ltd is located in Tianjin City, China. This city is the largest manufacturing base of steel materials in China that can save much cost for our customers. Furthermore, it is a port city that easier to transport cargo to every port all over the world.

We specialize in the production and sales of various scaffolding products, such as scaffolding ringlock system, scaffolding plank, frame system, scaffolding prop, adjustable screw jack, scaffolding pipes&couplers, cuplock system, kwikstage scaffolding and other scaffolding materials. We are currently exported to 30 countries throughout Southeast Asia, Europe, South America, the Middle East, North America and Austrilia etc.

After years of development, our company now have the complete and strict quality controlling system from raw materials, production procedure, inspection before shipment. Besides, our professional and experienced sales team also can provide you satisfied solution and best service.

Our principle: "Quality First, Customer Foremost and Service Ultmost." We devote ourselves to meet your requirements and promote our mutually beneficial cooperation. We sincerely welcome you !



简介
COMPANY PROFILE

RINGLOCK SCAFFOLDING SYSTEM

Material: Q355, Q235 steel pipe

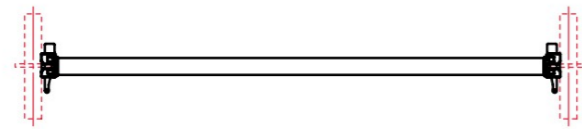
Surface treatment: hot dipped galvanized, electro-galv., powder coated

● Ringlock Standard with Spigot

Item No.	Size (OD x Thickness)	Length	
HY-RS05	48.3*3.2mm	0.5m	1' 7''
HY-RS10	48.3*3.2mm	1.0m	3' 3''
HY-RS15	48.3*3.2mm	1.5m	4' 9''
HY-RS20	48.3*3.2mm	2.0m	6' 6''
HY-RS25	48.3*3.2mm	2.5m	8' 2''
HY-RS30	48.3*3.2mm	3.0m	9' 9''

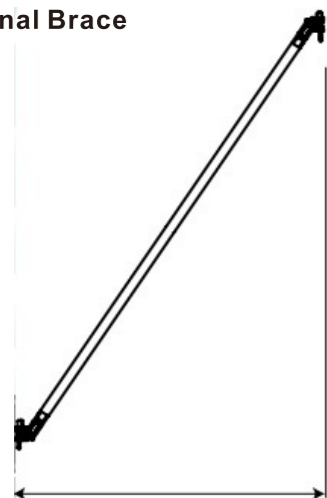


● Ringlock Ledger



Item No.	Size (OD x Thickness)	Length (mm)	Item No.	Length (mm)	
HY-RL06	48.3*3.0mm	600	HY-RL2'	610	2'
HY-RL09	48.3*3.0mm	900	HY-RL3'	914	3'
HY-RL12	48.3*3.0mm	1200	HY-RL4'	1219	4'
HY-RL15	48.3*3.0mm	1500	HY-RL5'	1524	5'
HY-RL18	48.3*3.0mm	1800	HY-RL6'	1829	6'
HY-RL21	48.3*3.0mm	2100	HY-RL7'	2130	7'
HY-RL24	48.3*3.0mm	2400	HY-RL8'	2438	8'
HY-RL27	48.3*3.0mm	2700	HY-RL9'	2743	9'
HY-RL30	48.3*3.0mm	3000	HY-RL10'	3030	10'
			HY-RL065	650	
			HY-RL073	732	
			HY-RL089	885	
			HY-RL107	1070	
			HY-RL109	1088	
			HY-RL115	1150	
			HY-RL129	1286	
			HY-RL148	1484	
			HY-RL150	1500	
			HY-RL157	1572	
			HY-RL163	1625	
			HY-RL207	2072	
			HY-RL257	2572	
			HY-RL300	3000	

● Diagonal Brace



Item No.	Size (OD x Thickness)	Length (Width x Height/ mm)
HY-RB06	48.3*2.5mm	600*1500/2000
HY-RB09	48.3*2.5mm	900*1500/2000
HY-RB12	48.3*2.5mm	1200*1500/2000
HY-RB15	48.3*2.5mm	1500*1500/2000
HY-RB18	48.3*2.5mm	1800*1500/2000
HY-RB21	48.3*2.5mm	2100*1500/2000
HY-RB24	48.3*2.5mm	2400*1500/2000
HY-RB27	48.3*2.5mm	2700*1500/2000
HY-RB30	48.3*2.5mm	3000*1500/2000

RINGLOCK SCAFFOLDING SYSTEM

Material: Q355, Q235 steel pipe

Surface treatment: hot dipped galvanized, electro-galv., powder coated

● Intermediate Transom



Item No.	Size (OD x Thickness)	Length (mm)
HY-IT073	48.3*3.0mm	732
HY-IT109	48.3*3.0mm	1088
HY-IT115	48.3*3.0mm	1150
HY-IT148	48.3*3.0mm	1484
HY-IT157	48.3*3.0mm	1572
HY-IT257	48.3*3.0mm	2572
HY-IT307	48.3*3.0mm	3072

● Side Bracket

Item No.	Size (OD x Thickness)	Length (mm)
HY-SB065	48.3*3.2mm	650
HY-SB088	48.3*3.2mm	880
HY-SB10	48.3*3.2mm	1000



● Base Collar



Item No.	Size (OD x Thickness)	Length (mm)
HY-BC020	48.3*3.2mm	200
HY-BC024	48.3*3.2mm	240
HY-BC030	48.3*3.2mm	300

● Srew Jack Base

Item No.	Size	Length (mm)
HY-SJ38	38*4.0/5.0, 140*140*5mm	600
HY-SJ48	48*4.0/5.0, 150*150*5mm	600



● Srew U Jack Base

Item No.	Size	Length (mm)
HY-SJU38	38*4.0/5.0, 170*130*50*5mm	600
HY-SJU48	48*4.0/5.0, 180*150*50*5mm	600



OCTAGONLOCK SCAFFOLDING

Material: Q355, Q235 steel pipe

Surface treatment: hot dipped galvanized, electro-galv., powder coated

● Octagonlock Standard with spigot

No.	Size(mm)	Length(mm)
HY-OS05	48.3*3.2	500
HY-OS10	48.3*3.2	1000
HY-OS15	48.3*3.2	1500
HY-OS20	48.3*3.2	2000
HY-OS25	48.3*3.2	2500
HY-OS30	48.3*3.2	3000

● Octagonlock Ledger

No.	Size(mm)	Length (mm)
HY-OL06	48.3*2.5	600
HY-OL09	48.3*2.5	900
HY-OL12	48.3*2.5	1200
HY-OL15	48.3*2.5	1500
HY-OL18	48.3*2.5	1800
HY-OL20	48.3*2.5	2000

● Octagonlock Diagonal Brace

No.	Size(mm)	W*H(mm)
HY-OB16	33.5*2.3*1606	600*1500
HY-OB17	33.5*2.3*1710	900*1500
HY-OB18	33.5*2.3*1859	1200*1500
HY-OB20	33.5*2.3*2042	1500*1500
HY-OB22	33.5*2.3*2251	1800*1500
HY-OB24	33.5*2.3*2411	2100*1500



STEEL PROP

Materials: Q235, Q195, Q355 steel pipe

Type: heavy duty type, light duty type, push-pull prop

Surface treatment: painted, powder coated, electro-galvanized, hot dip galvanized

● Heavy Duty Prop (Normal Nut)

Item No.	Min --- Max	Tube Size (mm)
HY-HP32	1.8m --- 3.2m	Inner pipe: 48*2.4mm Outer pipe :60*2.4mm
HY-HP36	2.0m --- 3.6m	
HY-HP39	2.2m --- 3.9m	
HY-HP40	2.5m --- 4.0m	
HY-HP55	3.0m --- 5.5m	



● Light Duty Prop (Cup Nut)

Item No.	Min---Max	Tube Size (mm)
HY-LP30	1.7m --- 3.0m	Inner pipe: 48*1.8mm Outer pipe :56*1.8mm
HY-LP32	1.8m --- 3.2m	
HY-LP36	2.0m --- 3.6m	
HY-LP40	2.2m --- 4.0m	



● Push-pull Prop



Item No.	Min --- Max
HY-PP1	1.75 --- 3.12m
HY-PP2	1.98 --- 3.35m
HY-PP3	2.59 --- 3.95m



● Bridge Leg

Item No.	Min---Max	Tube Size(mm)
HY-BL8	8'	89*4.0mm
HY-BL10	10'	
HY-BL12	12'	
HY-BL14	14'	
HY-BL16	16'	
HY-BL20	20'	

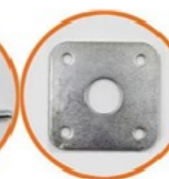
● Tripod & accessories



TRIPOD



NUT



PLATE



U HEAD PLATE



SLEEVE



G PIN

SCAFFOLDING PLANK

Material: Q195, Q235

Surface treatment: pre-galvanized, hot dipped galvanized

● Metal Plank Width 210/240/250mm- Southeast Asia Type



Item No.	Size (W*H*Thick/mm)	Length (m)	Stiffener
HY-MP210	210*45*1.1/1.2	1m-4m	Flat/box/v-rib
HY-MP240	240*45*1.1/1.2	1m-4m	Flat/box/v-rib
HY-MP250	250*50/40*1.2	1m-4m	Flat/box/v-rib

● Steel Board Width 225mm- Middle East Type

Item No.	Size (W*H*Thick/mm)	Length (m)	Stiffener
HY-SP2251	225*38*1.5	1m-4m	box
HY-SP2252	225*38*1.8	1m-4m	box
HY-SP2253	225*38*2.0	1m-4m	box



● Kwikstage Plank Width 230mm

Item No.	Size (W*H*Thick/mm)	Length (mm)	Stiffener
HY-SP231	230*63*1.8	760	Flat
HY-SP232		1250	Flat
HY-SP233		1810	Flat
HY-SP234		2420	Flat



SCAFFOLDING PLANK

Material: Q195, Q235

Surface treatment: pre-galvanized, hot dipped galvanized

● Plank with hooks

Item No.	Size (W*H*Thick/mm)	Length (mm)	Stiffener
HY-PH21	210*45*1.1/1.2	900-3000	Flat
HY-PH24	240*45*1.1/1.2	900-3000	Flat
HY-PH25	250*50*1.1/1.2	900-3000	Flat
HY-PH30	300*50*1.2/1.5	900-3000	Flat



● Catwalk



Item No.	Size (W*H*Thick/mm)	Length (mm)	Stiffener
HY-CW42	420*45*1.1/1.2	1829	Flat
HY-CW45	450*45*1.1/1.2	1829	Flat
HY-CW48	480*45*1.1/1.2	1829	Flat
HY-CW50	500*45*1.1/1.2	1829	Flat

● European/America type Plank

Item No.	Size (W*H*Thick/mm)	Length (mm)
HY-P321	320*76*1.5/1.8	650
HY-P322		1150
HY-P323		1570
HY-P324		2130
HY-P325		3050

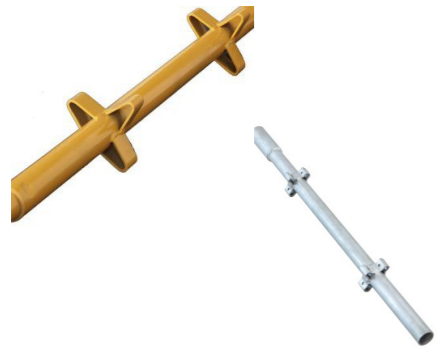


KWIKSTAGE SCAFFOLDING

Material: Q355, Q235 steel pipe

Surface treatment: hot dipped galvanized, electro-galv., powder coated

•Standard with spigot



Item No.	Size (OD x Thickness)	Length	
HY-KS05	48.3*4.0mm	0.5m	1' 7''
HY-KS10	48.3*4.0mm	1.0m	3' 3''
HY-KS15	48.3*4.0mm	1.5m	4' 9''
HY-KS20	48.3*4.0mm	2.0m	6' 6''
HY-KS25	48.3*4.0mm	2.5m	8' 2''
HY-KS30	48.3*4.0mm	3.0m	9' 9''

•Kwikstage Ledger

Item No.	Size (OD x Thickness)	Length (m)
HY-KL08	48.3*3.2mm	0.8
HY-KL10	48.3*3.2mm	1
HY-KL12	48.3*3.2mm	1.2
HY-KL18	48.3*3.2mm	1.8
HY-KL24	48.3*3.2mm	2.4



•Kwikstage Diagonal Brace



Item No.	Size (OD x Thickness)	Length (m)
HY-KB01	48.3*2.5mm	1.83
HY-KB02	48.3*2.5mm	2.75
HY-KB03	48.3*2.5mm	3.53
HY-KB04	48.3*2.5mm	3.66

KWIKSTAGE SCAFFOLDING

Material: Q355, Q235 steel pipe

Surface treatment: hot dipped galvanized, electro-galv., powder coated

•Kwikstage Transom

Item No.	Size (OD x Thickness)	Length (m)
HY-KT08	48.3*3.2mm	0.8
HY-KT10	48.3*3.2mm	1
HY-KT12	48.3*3.2mm	1.2
HY-KT18	48.3*3.2mm	1.8
HY-KT24	48.3*3.2mm	2.4



•Tie Bar



Item No.	Size	Length (m)
HY-TB12	50*50*5mm	1.2
HY-TB18	50*50*5mm	1.8
HY-TB24	50*50*5mm	2.4

•Platform/Board Braket & Toe Board Braket



CUPLOCK SCAFFOLDING SYSTEM

Material: Q355, Q235 steel pipe

Surface treatment: hot dipped galvanized, electro-galv., powder coated

● Standard with spigot

Item No.	Size (OD x Thickness)	Length(m)
HY-CS10	48.3*3.2mm	1
HY-CS13	48.3*3.2mm	1.3
HY-CS15	48.3*3.2mm	1.5
HY-CS18	48.3*3.2mm	1.8
HY-CS20	48.3*3.2mm	2
HY-CS23	48.3*3.2mm	2.3
HY-CS25	48.3*3.2mm	2.5
HY-CS28	48.3*3.2mm	2.8
HY-CS30	48.3*3.2mm	3



● Cuplock Ledger



Item No.	Size (OD x Thickness)	Length (m)
HY-CL09	48.3*3.0mm	0.9
HY-CL10	48.3*3.0mm	1
HY-CL12	48.3*3.0mm	1.2
HY-CL13	48.3*3.0mm	1.3
HY-CL15	48.3*3.0mm	1.5
HY-CL18	48.3*3.0mm	1.8
HY-CL20	48.3*3.0mm	2
HY-CL25	48.3*3.0mm	2.5

● Cuplock Diagonal Brace



Item No.	Size (OD x Thickness)	Bay Size (m)
HY-CB1815	48.3*3.0mm	1.8*1.5
HY-CB1820	48.3*3.0mm	1.8*2.0
HY-CB2515	48.3*3.0mm	2.5*1.5
HY-CB2520	48.3*3.0mm	2.5*2.0
HY-CB3020	48.3*3.0mm	3.0*2.0

● Cuplock Transom

Item No.	Size (OD x Thickness)	Length (m)
HY-CT08	48.3*3.0mm	0.8
HY-CT13	48.3*3.0mm	1.3
HY-CT18	48.3*3.0mm	1.8



OTHER ANCILLARY SCAFFOLDING

● Staircase/Step Ladder

Item No.	Width(mm)	Span Size (W * H * L/mm)
HY-SC01	450/480/860/900	1829*1725*2515
HY-SC02		1829*1955*2677
HY-SC03		1829*1524*2370
HY-SC04		1800*2000*2691
HY-SC05		1800*1725*2493
HY-SC06		2100*2000*2922
HY-SC07		1500*2000*2370



● Ladder Beam

Materials: Q355, Q235 steel pipe
Surface treatment: pintoed, hot dipped galv.

Pipe Size(mm)	Width(mm)	Length (m)
48.3*3.2/4.0mm	300	1m-6m



● Monkey Ladder/Steel Ladder

Width * Length(mm)	Pipe Size
300*4000	Vertical pipe: 33*2.0mm Step pipe: 25*1.5mm
300*3000	
300*2000	



● Caster Wheel



FRAME SCAFFOLDING

Materials: Q235, Q195

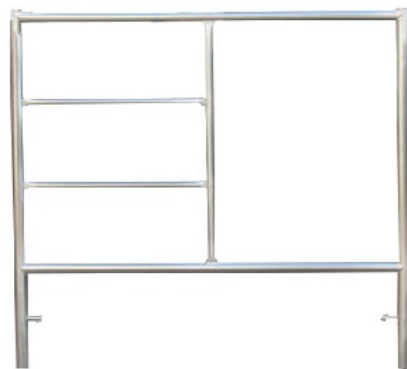
Surface treatment: painted, pre-galv., hot dipped galvanize, powder coated

• Main Frame/Walk Through Frame



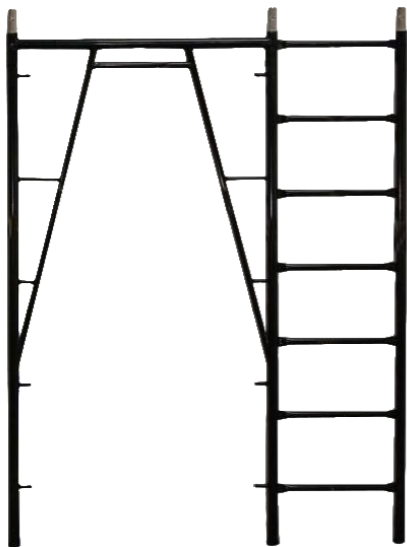
Item No.	Size: W* H/mm	Tube Size
HY-MF1	1219*1930	Main Tube : 42*2.2mm Outer Tube: 25*1.5mm
HY-MF2	1219*1700	
HY-MF3	1219*1524	
HY-MF4	914*1700	

• Ladder Frame/H Frame



Item No.	Size: W* H/mm	Tube Size
HY-LF1	1219*1930	Main Tube : 42*2.2mm Outer Tube: 25*1.5mm
HY-LF2	1219*1700	
HY-LF3	1219*1524	
HY-LF4	914*1700	

• Snap on Lock Frame-Walk Through Frame



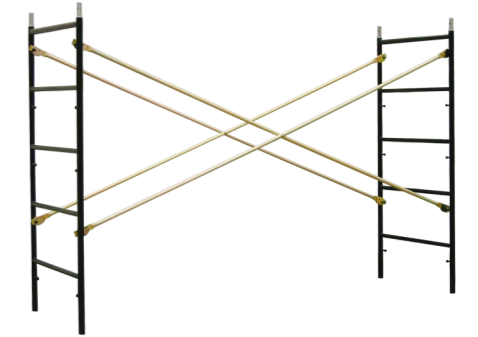
Item No.	Width(mm)	Height(mm)	Ladder
HY-SF01	3' (914)	4' (1219)	Width 18"
HY-SF02	3' (914)	5' (1524)	
HY-SF03	3' (914)	6' 8' ' (2032)	
HY-SF04	5' (1524)	6' 8' ' (2032)	

FRAME SCAFFOLDING

Materials: Q235, Q195

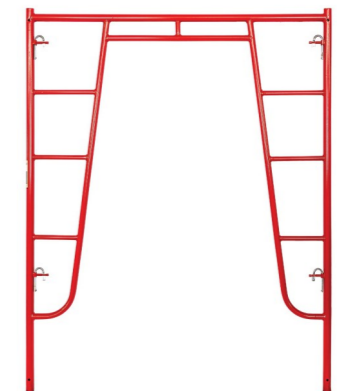
Surface treatment: painted, pre-galv., hot dipped galvanize, powder coated

• Snap on Lock Frame-Ladder Frame



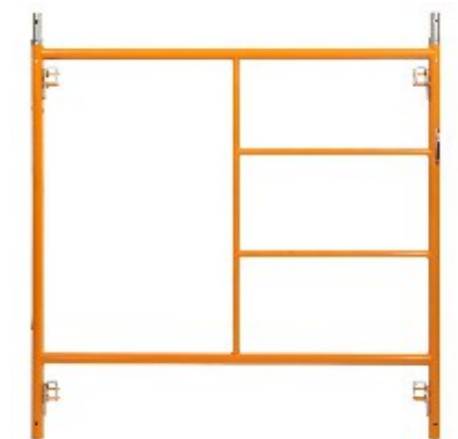
Item No.	Width(mm)	Height(mm)
HY-SF05	3' (914)	3' 1' ' (939)
HY-SF06	3' (914)	4' 1' ' (1244)
HY-SF07	3' (914)	5' (1524)
HY-SF08	5' (1524)	5' 1' ' (1549)

• Vanguard Lock Frame- Walk Through Frame



Item No.	Width(mm)	Height(mm)
HY-VF01	3' (914)	5' (1524)
HY-VF02	3' (914)	6' 4' ' (1930)
HY-VF03	5' (1524)	6' 4' ' (1930)

• Vanguard Lock Frame- Mason Frame



Item No.	Width(mm)	Height(mm)
HY-VF04	5' (1524)	3' (914)
HY-SF05	5' (1524)	4' (1219)
HY-SF06	5' (1524)	5' (1524)

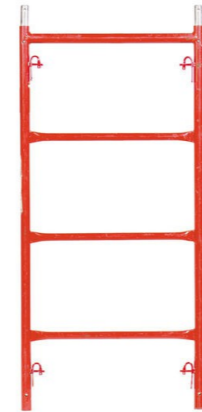
FRAME SCAFFOLDING

Materials: Q235, Q195

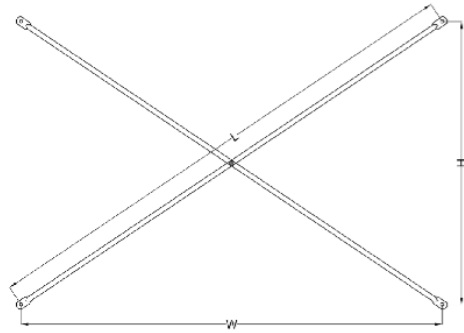
Surface treatment: painted, pre-galv., hot dipped galvanize, powder coated

● Vanguard Lock Frame- Narrow Frame

Item No.	Width(mm)	Height(mm)
HY-VF07	2' (609)	3' (1524)
HY-VF08	2' (609)	5' (1930)
HY-VF09	2' (609)	6' 4'' (1930)

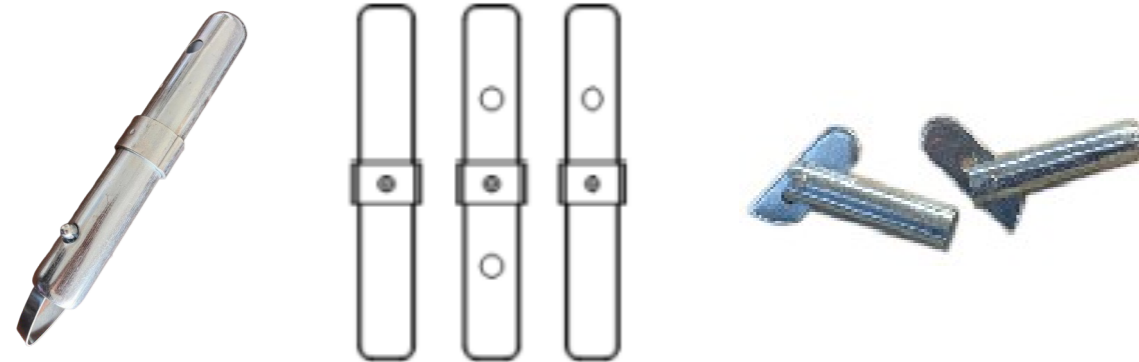


● Cross Brace



Item No.	W (mm)	H (mm)	L (mm)	Tube Size
HY-CB01	1829	1219	2198	21*1.4mm 25*1.8mm
HY-CB02	1829	914	2045	
HY-CB03	1829	610	1928	
HY-CB04	1524	1219	1952	
HY-CB05	2133	1219	2457	
HY-CB06	2438	1219	2726	

● Joint Pin & lock pin



ADJUSTABLE SCREW JACK

Type: Solid, Hollow

Material: Solid--- 20# round bar, hollow--- seamless pipe, Q235 welded pipe

Surface treatment: painted, electro-galvanized, hot dipped galvanized

Product Name	Srew Bar (OD*L/mm)	Base Plate (mm)
Jack Base (solid)	30*600	120*120*5/140*140*5
	32*600	120*120*5/140*140*5
	34*600	120*120*5/140*140*5
U Head Jack Base (solid)	30*600	150*120*50*5
	32*600	150*120*50*5
	34*600	150*120*50*5
Jack Base (hollow)	38*4.0/5.0*600	140*140*5/150*150*6
	48*4.0/5.0*600	140*140*5/150*150*6
U Head Jack Base (hollow)	38*4.0/5.0*600	170*130*50*5/180*150*50*6
	48*4.0/5.0*600	170*130*50*5/180*150*50*6



SCAFFOLDING COUPLERS&ACCESSORIES

Material: Q235, Q355
 Standard: EN74, BS1139
 Surface treatment: electro-galv., hot dipped galvanized



BS Pressed Double/Fixed Coupler
 specification:48.3mm
 weight:0.82kg



BS Pressed Swivel Coupler
 specification:48.3mm
 weight:0.99kg



Pressed Bone Joint
 specification:48.3mm
 weight:0.6kg



Pressed Single Coupler
 specification:48.3mm
 weight:0.45kg



Pressed Board Retaining Coupler
 specification:48.3mm
 weight:0.58kg



Pressed Putlog Coupler
 specification:48.3mm
 weight:0.62kg



BS Drop Forged Double/Fixed Coupler
 specification:48.3mm
 weight:0.98kg



BS Drop Forged Swivel Coupler
 specification:48.3mm
 weight:1.12kg



Sleeve Coupler
 specification:48.3mm
 weight:1.02kg



Drop Forged Putlog Coupler
 specification:48.3mm
 weight:0.64kg



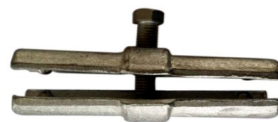
Drop Forged Board Retaining Coupler
 specification:48.3mm
 weight:0.625kg



Beam Coupler/Girder Coupler
 specification:48.3mm
 weight:1.5kg



Drop Forged Swivel Beam Coupler
 specification:48.3mm
 weight:1.42kg



Drop Forged Bone Joint
 specification:48.3mm
 weight:1.12kg



Drop Forged Single Coupler
 specification:48.3mm
 weight:0.52kg



Heavy duty DF Swivel Coupler
 specification:48.3mm
 weight:1.6kg



JIS Pressed Swivel Coupler
 specification:48.6mm
 weight:0.65kg



JIS Pressed Fixed/Double Coupler
 specification:48.6mm
 weight:0.65kg



Korean Pressed Swivel Coupler
 specification:48.6mm
 weight:0.65kg



Korean Pressed Fixed/Double Coupler
 specification:48.6mm
 weight:0.65kg

SCAFFOLDING COUPLERS&ACCESSORIES

Material: Q235, Q355
 Standard: EN74, BS1139
 Surface treatment: electro-galv., hot dipped galvanized



Pressed Beam/Girder Coupler
 specification:48.6mm
 weight:1.0kg



Pressed Swivel Coupler (48*60mm)
 specification:48.6*60.5mm
 weight:0.68kg



Pressed Fixed/Double Coupler
 specification:60.5*60.5mm
 weight:0.7kg



Pressed Swivel Coupler
 specification:42*48.6mm
 weight:0.6kg



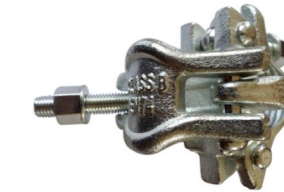
JIS Bone Joint
 specification:48.6mm
 weight:0.65kg



German Drop Forged Double/Fixed Coupler
 specification:48.3mm
 weight:1.25kg



German Drop Forged Swivel Coupler
 specification:48.3mm
 weight:1.45kg



American Drop Forged Double/Fixed Coupler
 specification:48.3mm
 weight:1.12kg



American Drop Forged Swivel Coupler
 specification:48.3mm
 weight:1.71kg



Limpet Coupler
 specification:48.3mm
 weight:0.3kg



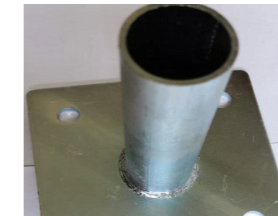
Ladder Coupler
 specification:48.3mm
 weight:0.45kg



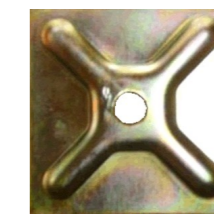
Drop Forged Ladder Coupler
 specification:48.3mm
 weight:0.72kg



Fence Clamp
 specification:48.3mm
 weight:0.43kg



Base Plate
 specification:48.3mm
 weight:1.0kg



washer plate



water stop



Tie Rod Nut



Drop Forged Panel Clamp



Pressed Panel Clamp



Safety Net

SCAFFOLDING PIPE

Materials: Q355, Q235, Q195
 Standard: BS1139, STK400/500, EN1029, EN39 etc
 Surface treatment: hot dipped galv., pre-galv., black, painted

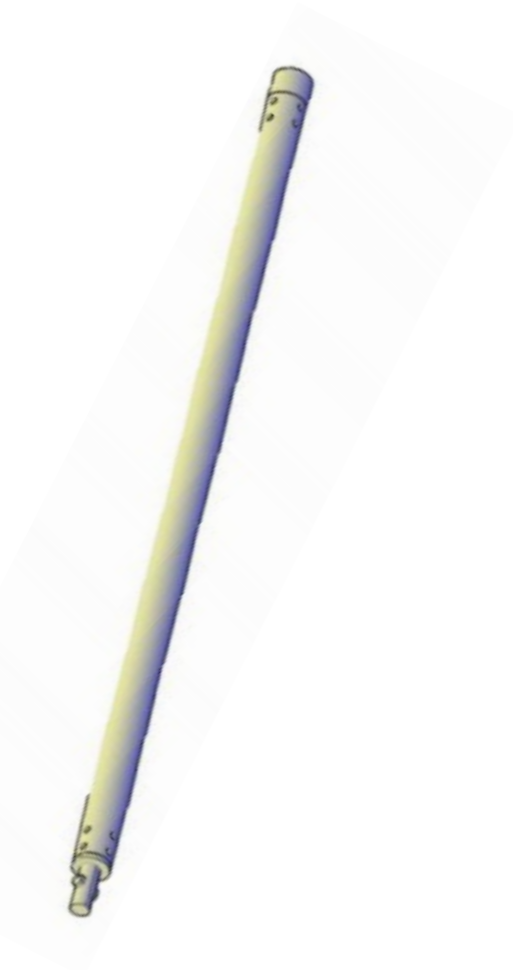
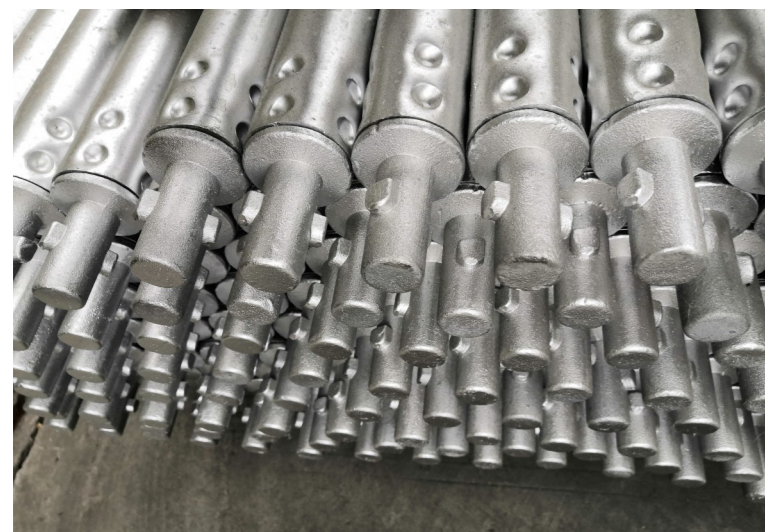
● Steel Pipe

OUTER DIAMETER(mm)	THICKNESS (mm)	LENGTH (m)
48.3/48.6	1.8-4.0mm	1m-12m
38	1.8-4.0mm	1m-12m
42	1.8-4.0mm	1m-12m
60	1.8-4.0mm	1m-12m



● Tubelock

Item No.	Description	Length
HY-TL4	Tube with end fitting	4'
HY-TL6		6'
HY-TL8		8'
HY-TL10		10'
HY-TL13		13'
HY-TL16		16'
HY-TL20		20'
HY-TL24		24'



ALUMINUM LADDER

● Single Straight Ladder

Length (m)	Width (cm)	Step Height (cm)
3m/3.05m	375/450	27/30
4m/4.25m	375/450	27/30
5m	375/450	27/30
6/6.1m	375/450	27/30



● Single Telescopic Ladder



Length (m)	Width (cm)	Step Height (cm)
2.6	47	30
3.2	47	30
3.8	48	30
4.4	49	30
5.2	50	30

● Multi-Purpose Telescopic Ladder

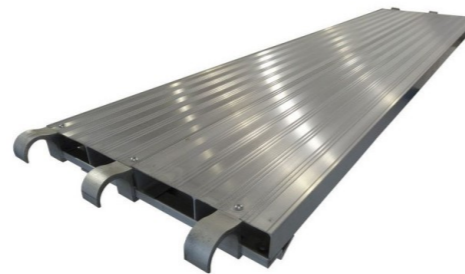


Length (m)	Width (cm)	Step Height (cm)
1.65-3.4	48	40
2.05-4.2	48	40
2.45-5.0	48	40
2.85-5.8	48	40
3.25-6.6	48	40
3.65-7.4	48	40
4.05-8.20	48	40

ALUMINUM SCAFFOLDING

● Aluminum Plank

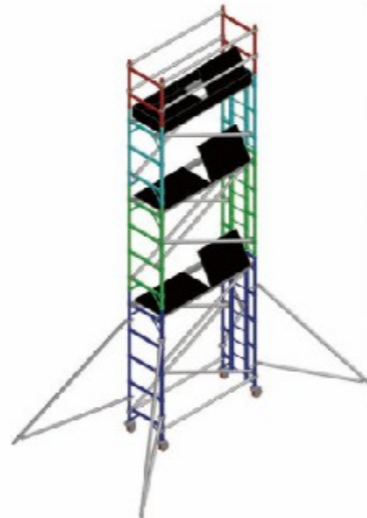
Item No.	Material	Length	Width	Lbs Per Sq.Ft
HY-AP200	6061-T6	2'	19.25''	75
HY-AP220	6061-T6	2'-2''	19.25''	75
HY-AP211	6061-T6	2'-11''	19.25''	75
HY-AP300	6061-T6	3'	19.25''	75
HY-AP360	6061-T6	3'-6''	19.25''	75
HY-AP390	6061-T6	3'-9''	19.25''	75
HY-AP310	6061-T6	3'-10''	19.25''	75
HY-AP400	6061-T6	4'	19.25''	75
HY-AP500	6061-T6	5'	19.25''	75
HY-AP520	6061-T6	5'-2''	19.25''	75
HY-AP550	6061-T6	5'-5''	19.25''	75
HY-AP600	6061-T6	6'	19.25''	75
HY-AP700	6061-T6	7'	19.25''	75
HY-AP800	6061-T6	8'	19.25''	75
HY-AP860	6061-T6	8'-6''	19.25''	75
HY-AP900	6061-T6	9'	19.25''	50
HY-AP100	6061-T6	10'	19.25''	50



● Single Width Climb Ladder Scaffolding

Single width aluminum scaffolding accords with Europe safety standard EN1004 completely. For its width is 0.75m, it can be used for limited space, such as narrow footpath and passageway

Dimension	0.75*2m,0.75*3m,0.75*3m
Avaiable Height	2m-40m
Frame Materials	Aluminum alloy 6082-T6
Platform Load	270kg
Main Tube	50.8*2mm



ALUMINUM SCAFFOLDING

● Aluminum Step-stair Scaffolding

It is easier for workers to go up and down and carry tools. Aluminum alloy is light weight, non-rust , solid and durable

Dimension	1.35*2m,1.35*2.5m,1.35*3m
Avaiable Height	2m-40m
Frame Materials	Aluminum alloy 6082-T6
Platform Load	270kg
Main Tube	50.8*2mm



● Double Width Climb Ladder Scaffolding

Double width aluminum can increase platform space, reduce the building time. It is a good choice for cleaning and repairing

Dimension	1.35*2m,1.35*2.5m,1.35*3m
Avaiable Height	2m-40m
Frame Materials	Aluminum alloy 6082-T6
Platform Load	270kg
Main Tube	50.8*2mm

